

# 1986-1993 Ford 5.0 Mustang Passenger's side Supercharger Mounting Bracket (Dual Plate)

Assemble the main bracket, plate and other parts necessary to relocate the alternator and smog pump and make room for the supercharger. For 1992 and later vehicles, please review points A through H before starting.

- A. Measure the length of the pivot boss on the alternator and record. It should be very close to 3".
- B. In a similar manner, measure the boss on the smog pump. When combined with the .920" spacer, it should be 4.050". Record these measurements so that in the event of a belt alignment problem, Paxton can properly advise you.
- C. Place the smog pump and alternator on the large aluminum mounting bracket as shown. After making sure the 6 1/4" bolts have a washer on them, enter the cast mounting bracket from the rear (coming towards you). Place the .920" tube spacer over the bolt on the smog pump. Lower supercharger mounting plate over bolts. The idea is to sandwich the alternator and smog pump between the mounting bracket and plate. Place washers and nuts on the 6-1/4" bolts and finger tighten. For vehicles equipped with alternators having larger 7/16" pivot bolts, it will be necessary to enlarge the corresponding hole in the plate.
- D. Start the 3/8-16 x 1" fastener with a washer at the top of the bracket and finger tighten. Insert the 6-3/4" and 7-1/4" bolts. These bolts will later hold assembly to engine. (See Fig. 1-a.)

**\*\*\* NOTE \*\*\***

Remember to place the .920" spacer between the smog pump and mounting plate.

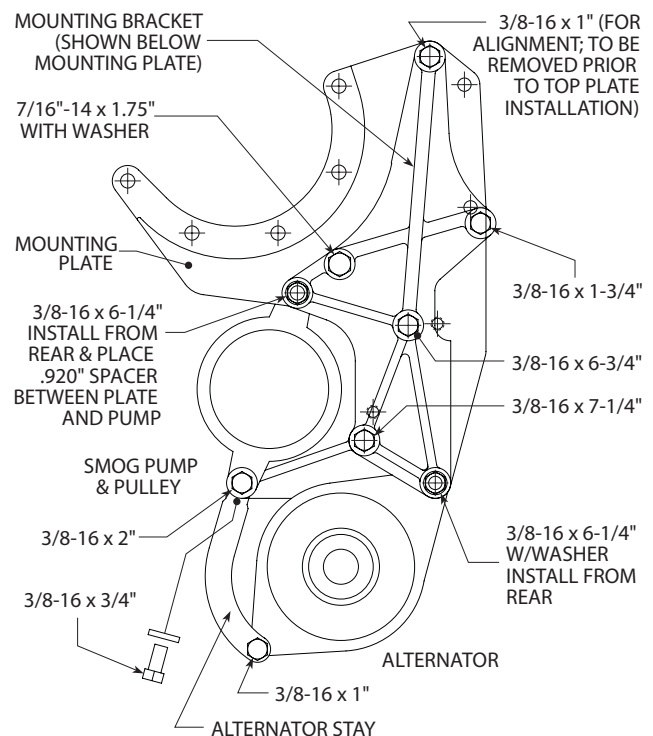


Fig. 1-a

- E. Attach the Paxton alternator brace between the boss on the smog pump and alternator with the 3/8-16 x 1" bolts. On 1992 and later Mustangs, it may be necessary to drill and tap the "blanked" hole in the smog pump. To accomplish this use an R size bit and a 3/8-16 size tap.
- F. Tighten all fasteners in the bracket/accessory assembly. (See Fig. 1-a.)
- G. Lower the entire assembly into position and start all four fasteners that hold it to the engine. Tighten all fasteners in a progressive manner.
- H. Reconnect alternator wires and use a tie wrap to secure the wires.

- I. Place the oil drain hose onto the supercharger drain fitting and secure with a hose clamp. Arrange the clamp screw housing so it will not interfere with the mounting plate when installed.
- J. Feed the oil drain hose over the top of the smog pump and down towards the oil pan fitting while lowering the supercharger into position. Secure the supercharger with three 3/8-16 x 1" bolts and AN washers. (See Fig. 1-b.)

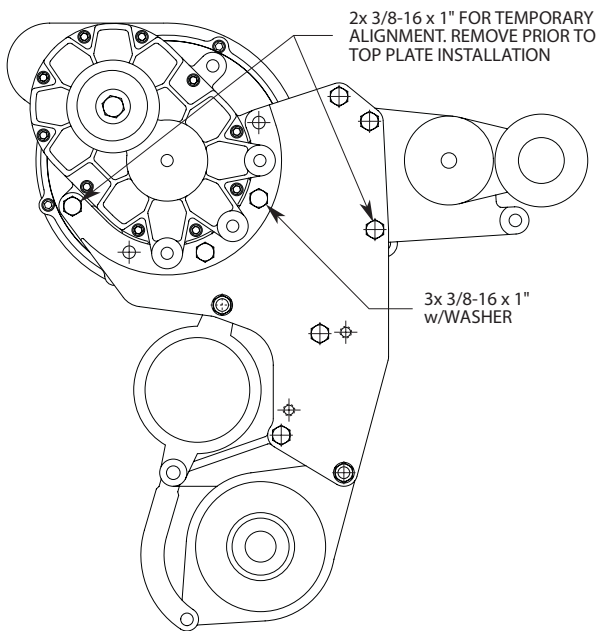


Fig. 1-b

- K. Connect the lower end of the oil drain hose to the fitting on the pan and secure with a hose clamp.
- L. Secure the factory spring tensioner assembly to the Vortech belt tensioner mounting bracket using the 1/2" carriage bolt.
- M. Replace the locking type nut on the A/C mounting bracket stud closest to the water pump with a standard nut.
- N. Depending on Ford's manufacturing tolerances, it may be necessary to trim about 1/8" off the edge of the flange on the A/C mounting bracket to provide room for the tensioner mounting bracket.
- O. Install the tensioner mounting bracket with tensioner between the supercharger mounting plate and A/C bracket stud using two standard flat washers as a spacer. Secure with two 3/8-16 x 1" bolts and washers and a 3/8-16 nut. (See Fig. 1-b.)

- P. Reinstall the stock accessory drive belt. (See Fig. 1-f.)

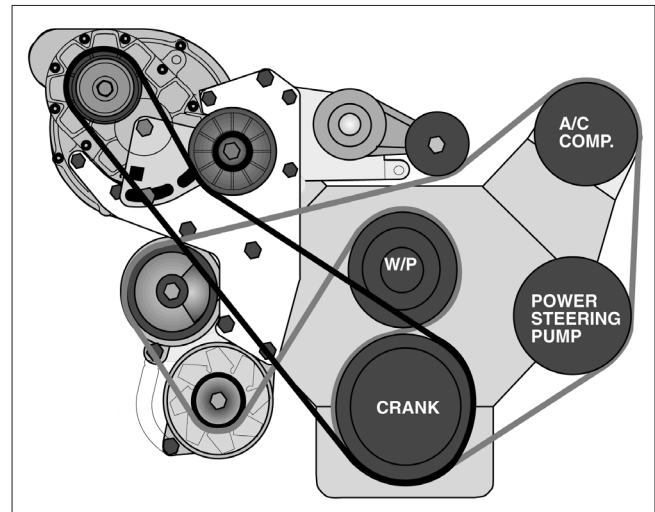


Fig. 1-f

- Q. The size of the belt tensioner arbor, idler pulley spacer and idler pulley will vary depending on which drive you purchased (8, 10 or cog). Verify that you are using the correct components for this step.

Install the belt tensioner arbor, idler adjustment screw, and idler adjustment screw bracket onto the supercharger support plate as shown. Loosely secure using two 1/4-20 x .75" screws.

(See Fig. 1-e.)

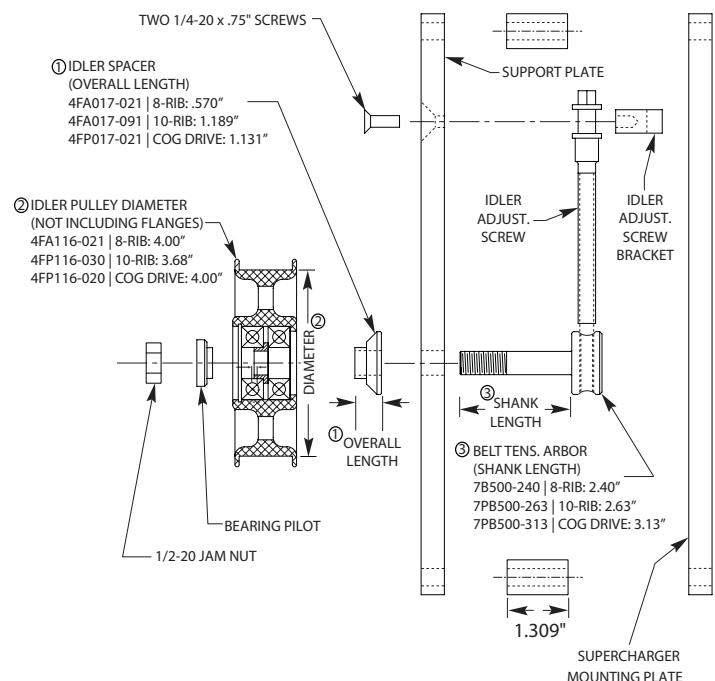


Fig. 1-e

- R. Attach the supercharger support plate with arbor components onto the supercharger and plate as shown. (See Fig. 1-c.)

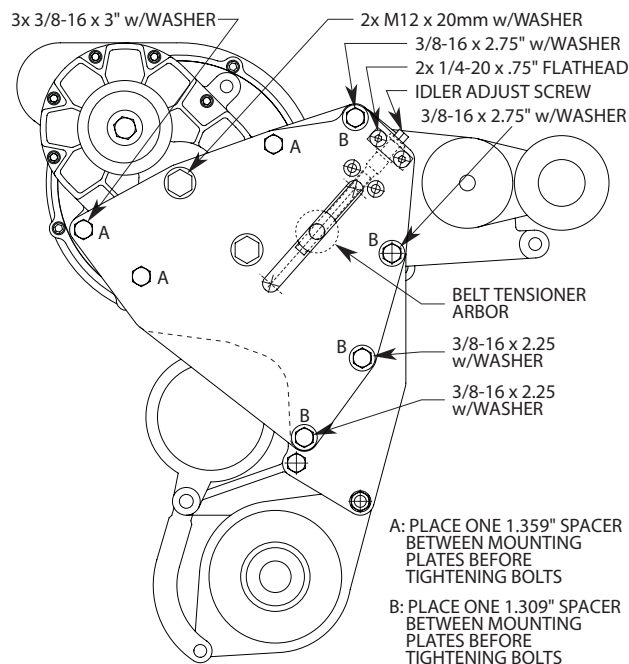


Fig. 1-c

- S. Install supercharger, idler, spacers and nut as shown. (See Figs. 1-d, 1-e.)

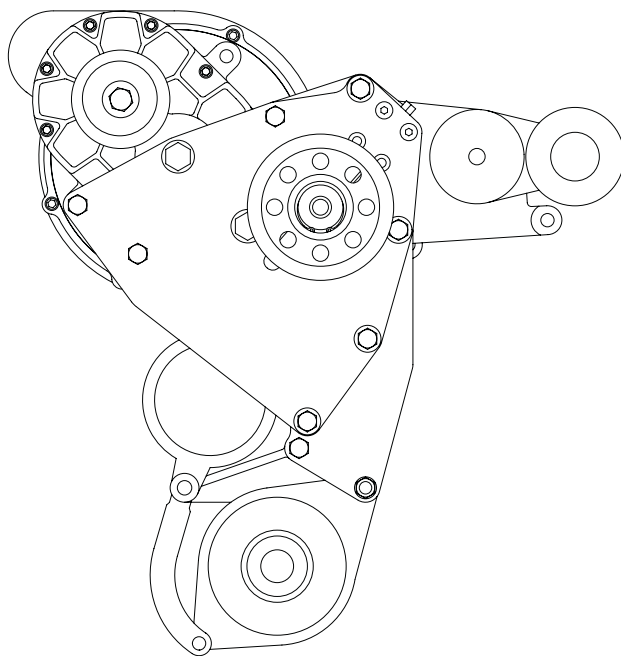


Fig. 1-d

- T. Install the supercharger drive belt.

\*\*\* NOTE \*\*\*

Check the accessory belt tensioner pulley alignment. It may be necessary to add or remove a washer to the stud behind the tensioner bracket.

- U. Reinstall the radiator shroud and fan assembly.

\*\*\* NOTE \*\*\*

Additional steps for 50mm drive systems continue below.

- V. Upper radiator hose and radiator inlet port will require modification for proper drive belt & pulley clearance.
- W. Attach supplied crank pulley adapter to damper using supplied 3/8-16 x 1.5" socket-head screws. Apply loctite to threads.
- X. Attach Vortech cog crank pulley to adapter using supplied 3/8-16 x 1" hex-head screws with washers. Apply loctite to threads.
- Y. Install supercharger pulley & drive belt.



# Mounting Bracket Assembly

## Passenger's Side, Dual Alum. Plate, 8-Rib



### PARTS LIST

**IMPORTANT:** Before beginning installation, verify that all parts are included in the kit. Report any shortages or damaged parts immediately.

PART NO.	DESCRIPTION	QTY.
4FA111-081	MTG BRKT ASY, PSIDE DUAL AL	1
2A017-049	SPACER "A", SBCHEV CARB BRKT	4
2A017-751-04	SPACER, .750"OD x 1.359"LONG	3
4FA010-045	MTNG PLT, S/C, 1/2" ALUM	1
4FA010-047	SUPRT PLT, S/C, PSIDE DUAL	1
4FA011-021	MOUNTING BRACKET, S/C	1
4FA015-015	ALTERNATOR STAY-PLATED	1
4FA017-021	SPACER, SMOG PUMP	1
4FA017-081	SPACER, IDLER, DUAL RENG D PLT	1
4FA116 021	IDLER ASY, 8-RIB x +4.0 ALUM	1
4FD017-011	PILOT, 6203/5 BRG, 1/2" SCREW	1
4PFA010-031	BRACKET, IDLER ADJUST SCREW	1
7A250-077	1/4-20 x .75" FLAT ALLEN GR5	2
7A375-075	3/8-16 x 3/4 GR5 HXHD ZINC	1
7A375-100	3/8-16 x 1" G5 HXHD PLT	4
7A375-175	3/8-16 x 1-3/4" HXHD GR5 PLT	1
7A375-200	3/8-16 X 2" HXHD GR5 PLTD	1
7A375-225	3/8-16 X 2-14 HXHD G8	2
7A375-275	3/8-16 X 2-3/4" HXCS G8 P ZINC	2
7A375-300	3/8-16 x 3" HXCS G5 P	3
7A375-625	3/8-16 x 6-1/4" HXHD	2
7A375-675	3/8-16 x 6.75" HXHD GR5 ZINC	1
7A375-751	3/8-16 x 7.5" HXHD GR8 ZINC	1
7A437-175	7/16-14 x 1.75" HXHD ZINC PLT	1
7B500-240	ARBOR, S/C TENS PLY, RENEGADE	1
7C012-020	M12 x 1.75" x 20mm HXHD PLTD	2
7F375-016	3/8-16 HX NUT	2
7F500-020	1/2-20 HEX JAM NUT GR5 ZINC	1
7J012-092	12mm WASHER, FLAT	3
7J375-044	3/8"SAE WASHER, PLTD	6
7K375-040	3/8"AN960 FLAT WASHER PLATED	15
7PA375-500	SCREW, IDLER ADJUST, 5.00"	1
007083	V3.0 INSTRUCTION SHT, 5.0 DUAL MTG PLT P	1



# Mounting Bracket Assembly

## Passenger's Side, Dual Alum. Plate, 10-Rib

### PARTS LIST



**IMPORTANT:** Before beginning installation, verify that all parts are included in the kit. Report any shortages or damaged parts immediately.

PART NO.	DESCRIPTION	QTY.
4FA111-101	MTG BRKT + DRV ASY, PSIDE 10-RIB	1
2A017-049	SPACER A, SBCHEV CARB BRKT	4
2A017-751-04	SPACER, .750 OD X 1.359 LONG	3
4FA010-045	MNTG PLT, S/C, 1/2" ALUM	1
7FA010-047	SUPRT PLT, S/C, P.SIDE DUAL	1
4FA011-021	MOUNTING BRACKET, S/C	1
4FA015-015	ALTERNATOR STAY-PLATED	1
4FA017-021	SPACER, SMOG PUMP	1
4FA017-091	SPACR, IDLER, DUAL REN PLKT, 10RIB	1
4FD017-011	PILOT, 6203/5 BRG, 1/2 SCREW	1
4FP116-030	IDLER W/BRNG ASSY, 36MM COG	1
4PFA010-031	BRACKET, IDLER ADJUST SCREW	1
7A250-077	1/4-20 X .75 FLAT ALLEN GR5	2
7A375-075	3/8-16 X 3/4 GR5 HXHD ZINC	1
7A375-100	3/8-16 X 1 G5 HHCS, PLT	4
7A375-175	3/8-16 X 1-3/4 HXHD GR5 PLT	1
7A375-200	3/8-16 X 2 HXHD GR5 PLTD	1
7A375-225	3/8-16 X 2-1/4 HXHD G8	2
7A375-275	3/8-16 X 2-3/4 HXCSG8P ZINC	2
7A375-300	3/8-16 X 3" HXCSG5P	3
7A375-625	3/8-16 X 6-1/4 HX HD GR5	2
7A375-675	3/6-16 X 6.75" HXHD GR5 ZINC	1
7A375-751	3/8-16 X 7.5" HXHD GR8 ZINC	1
7A437-175	7/16-14 X 1.75 HXHD ZINC PLT	1
7C012-020	M12 X 1.75 X 20MM HXHD CL8.8	2
7F375-016	3/8-16 HX NUT	2
7F500-020	1/2"-20 HEX JAM NUT GR5 ZINC	1
7J012-092	WASHER, M12 FLAT, ZN PLT	3
7J375-044	3/8 SAE WASHER, PLTD	6
7K375-040	3/8 AN960 FLAT WASHER PLATED	15
7PA375-500	SCREW, IDLER ADJUST, 5.00"	1
7PB500-263	ARBOR, S/C TENS PLY, 5.0 N2K	1
007083	V3.0 INSTRUCTION SHT, 5.0 DUAL MTG PLT P	1



# Mounting Bracket Assembly

## Passenger's Side, Dual Alum. Plate, 50mm Cog



### PARTS LIST

**IMPORTANT:** Before beginning installation, verify that all parts are included in the kit. Report any shortages or damaged parts immediately.

PART NO.	DESCRIPTION	QTY.
4FA111-111	MTG BRKT + DRV ASY, PSIDE 50MM COG	1
2A017-049	SPACER "A", SBCHEV CARB BRKT	4
2A017-751-04	SPACER, .750"OD x 1.359"LONG	3
4FA010-045	MTNG PLT, S/C, 1/2" ALUM	1
4FA010-047	SUPRT PLT, S/C, PSIDE DUAL	1
4FA011-021	MOUNTING BRACKET, S/C	1
4FA015-015	ALTERNATOR STAY-PLATED	1
4FA016-041	CRK PLY, ACCSRV, COG V1 86-93	1
4FA017-021	SPACER, SMOG PUMP	1
4FD017-011	PILOT, 6203/5 BRG, 1/2" SCREW	1
4FP017-021	SPACR, IDLR, DUAL PLT 50MM DRV	1
4FP116-020	IDLER W/BRNG ASSY, 50MM	1
4PFA010-031	BRACKET, IDLER ADJUST SCREW	1
7A250-077	1/4-20 x .75" FLAT ALLEN GR5	2
7A375-075	3/8-16 x 3/4 GR5 HXHD ZINC	1
7A375-100	3/8-16 x 1" G5 HXHD PLT	4
7A375-105	3/8-16 X 1" HHCS, GR8, PLATED	4
7A375-158	3/8-16 X 1.5" SHCS GR8 PLTD	4
7A375-175	3/8-16 X 1-3/4 HXHD GR5 PLT	1
7A375-200	3/8-16 X 2" HXHD GR5 PLTD	1
7A375-225	3/8-16 X 2-14 HXHD G8	2
7A375-275	3/8-16 X 2-3/4" HXCS G8 P ZINC	2
7A375-300	3/8-16 x 3" HXCS G5 P	3
7A375-625	3/8-16 x 6-1/4" HXHD	2
7A375-675	3/8-16 x 6.75" HXHD GR5 ZINC	1
7A375-751	3/8-16 x 7.5" HXHD GR8 ZINC	1
7A437-175	7/16-14 x 1.75" HXHD ZINC PLT	1
7C012-020	M12 x 1.75" x 20mm HXHD PLTD	2
7F375-016	3/8-16 HX NUT	2
7F500-020	1/2-20 HEX JAM NUT GR5 ZINC	1
7J012-092	12mm WASHER, FLAT	3
7J375-044	3/8"SAE WASHER, PLTD	6
7K375-040	3/8"AN960 FLAT WASHER PLATED	19
7PA375-500	SCREW, IDLER ADJUST, 5.00"	1
7PB500-313	ARBOR, S/C TENS PLY, 5.0 RACE	1
8R101-007	PULLEY RET ASSY 50MM COG	1
007083	V3.0 INSTRUCTION SHT, 5.0 DUAL MTG PLT P	1



# Pulley / Belt Reference Chart



**IMPORTANT:** Before beginning installation, verify that all parts are included in the kit. Report any shortages or damaged parts immediately.

\*\*\* NOTE \*\*\*

All configurations are tensioned from the backside of the belt, unless otherwise noted.

50MM Cog Drive Pulley / Belt Chart	70 Tooth 50mm Cog Crank Pulley P/N: 4MA018-070	75 Tooth 50mm Cog Crank Pulley P/N: 4MA018-075	80 Tooth 50mm Cog Crank Pulley P/N: 4MA018-080
30 Tooth 50mm Cog S/C Pulley P/N: 2A032-030	Belt Length - 1392mm P/N 2A042-139	Belt Length - 1392mm P/N 2A042-139	Belt Length - 1440mm (NOTE: Use non-polychain belt. Not available through Vortech.)
32 Tooth 50mm Cog S/C Pulley P/N: 2A032-032		NO BELT AVAILABLE	
34 Tooth 50mm Cog S/C Pulley P/N: 2A032-034			Belt Length - 1440mm P/N: 2A042-146 (NOTE: Polychain belt-Tension from inside)

8-Rib Drive Pulley / Belt Chart	4.60" X 8.00" 8-Rib Crank Pulley P/N: 4FA018-029
2.85" 8-Rib S/C Pulley P/N: 2A038-285	Belt Length - 56.5" P/N: 2A048-565
3.00" 8-Rib S/C Pulley P/N: 2A038-300	
3.15" 8-Rib S/C Pulley P/N: 2A038-315	
3.33" 8-Rib S/C Pulley P/N: 2A038-333	

10-Rib Drive w/6.87" Crank Pulley / Belt Chart	4.75" X 6.87" 10-Rib Crank Pulley P/N: 4FA018-023
2.50" 10-Rib S/C Pulley P/N: 2A031-250	Belt Length - 53.5" P/N 2A041-535
2.75" 10-Rib S/C Pulley P/N: 2A031-275	Belt Length - 54.0" P/N 2A041-540
2.95" 10-Rib S/C Pulley P/N: 2A031-295	
3.33" 10-Rib S/C Pulley P/N: 2A031-333	Belt Length - 54.5" P/N 2A041-545

10-Rib Drive w/8.00" Crank Pulley / Belt Chart	4.60" X 8.00" 10-Rib Crank Pulley P/N: 4FA018-028
2.75" 10-Rib S/C Pulley P/N: 2A031-275	Belt Length - 56.8" P/N 2A041-568
2.95" 10-Rib S/C Pulley P/N: 2A031-295	
3.33" 10-Rib S/C Pulley P/N: 2A031-333	Belt Length - 57.2" P/N 2A041-572





1650 Pacific Avenue, Channel Islands CA 93033-9901  
Phone: 805 247-0226 / Fax: 805 247-0669  
[www.vortechsuperchargers.com](http://www.vortechsuperchargers.com)  
M-F 7:00AM - 3:30PM (PST)



1300 Beacon Place • Oxnard, CA 93033-9901  
(805) 604-1336 / FAX (805) 604-1337  
[www.paxtonauto.com](http://www.paxtonauto.com)  
M-F 7:00 AM - 3:30 PM PST